

四合达-压电写真机

ECO/SUBLIMATION PRINTER

SHD-3202



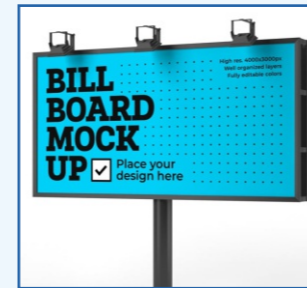
产品参数

Product parameters

机器型号 Machine Type	SHD-3202	喷头型号 Printhead Model	DX5/DX7/XP600/i1600/i3200	
喷头数量 Number Of Printhead	2	打印宽度 Print width	3200mm	
墨水颜色 Ink Color	CMYK/CMYKLC LM	墨水种类 Ink Type	水性墨水/弱溶剂墨水/热转印墨水 DYE INK/ECO Solvent Ink/Sublimation Ink	
打印精度 Printing accuracy	720dpi/1080dpi/1440dpi	喷头清洁 Printhead Cleaning	自动 Automatic	
加热方式 Heating Method	前后平台加热 Front and Rear Platform Heating	自动收纸 Automatic Delivery	有 Have	
平台吸风 Platform Suction	有 Have	打印接口 Print Interface	网口 Network Port	
工作环境 Working Environment	20-30°C	操作系统 Operating System	XP/Win7/Win10/Win11	
额定电压 Rated Voltage	220V/110V	额定功率 Rated Power	500W	
打印软件 RIP Software	蒙泰/锐印/Photoprint Maintop/Riprint/Photoprint	红外加热 Infrared Heating	有 Have	
机器尺寸/重量 Machine Size/Weight	4800*900*1700mm/540KG	包装尺寸/重量 Packing Size/Weight	4960*1000*900mm/760KG	
打印材料 Printing Material	PP背胶/灯片/相纸/油画布/写真布/PVC/车贴/喷绘布/反光膜/皮革/柏拉图/条幅布/热转印纸张等 PP Adhesive/Lamp Film/photo Paper/canvas Cloth/photo Cloth/pvc/car Stickers/painting Cloth/reflective Film/leather/plato/Banner Cloth/Thermal Transfer Paper, Etc.			
打印速度 Printing speed	DX5/DX7-2 4pass 35m ² /h 6pass 23m ² /h 8pass 15m ² /h	XP600-2 4pass 28m ² /h 6pass 20m ² /h 8pass 13m ² /h	i1600-2 4pass 28m ² /h 6pass 20m ² /h 8pass 13m ² /h	i3200-2 4pass 50m ² /h 6pass 44m ² /h 8pass 25m ² /h

产品应用

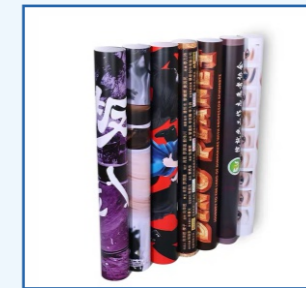
Applications



户外喷绘
Outdoor Spray Painting



广告展架
Advertising Display Rack



户外车贴
Outdoor Car Stickers



宣传海报
Poster



气模喷绘
Inflatable Inkjet



窗帘卷帘
Curtain Roller Blinds



装饰画
Decorative Paintings



反光膜
Reflective film

细节展示

Show in Detail



汉森板卡 HOSON Board

国内高端板卡系统，稳定性好、故障率低、经久耐用。
The domestic high-end board system has good stability, low failure rate and durability.



伺服电机 Servo Motor

高品质工业电机传动系统，保障设备打印的精度及稳定性。
High-quality industrial motor drive system ensures the accuracy and stability of equipment.



铝合金墨栈架 Aluminum Alloy Ink Stack

升降式铝合金墨栈架，智能化全自动清洗维护喷头。
Lifting aluminum alloy ink stack, intelligent automatic cleaning and maintenance of the printhead.



铝合金小车架 Aluminum Alloy Frame

铝合金加厚一体小车架，小车可整体升降，方便使用。
Aluminum alloy thickened trolley frame, the integrated trolley can be up and down, which is very convenient.



进口HIWIN导轨 Imported HIWIN Guide Rail

采用进口HIWIN静音直线导轨，保障设备高精度平稳运行，使用寿命更长。
Imported HIWIN silent linear guide rails ensure the printer with high-precision and stable operation and a longer lifespan.



高密度压纸轮 High Density Press Roller

双弹簧高密度压纸轮，走纸更精准，拆卸简单，可单独更换压轮。
High-density press rollers with double-spring, paper feeding is more accurate, disassemble easily, and the press rollers can be replaced separately.



连供墨盒系统 Continuous Cartridge System

恒定墨水液位压力，有效防止打印断墨。
Constant ink level pressure, effectively prevent ink broken when printing.



中英文按键面板 Chinese and English Key Panel

中英文操作按键面板及液晶显示屏。
Chinese and English operation key panel and liquid crystal display.